

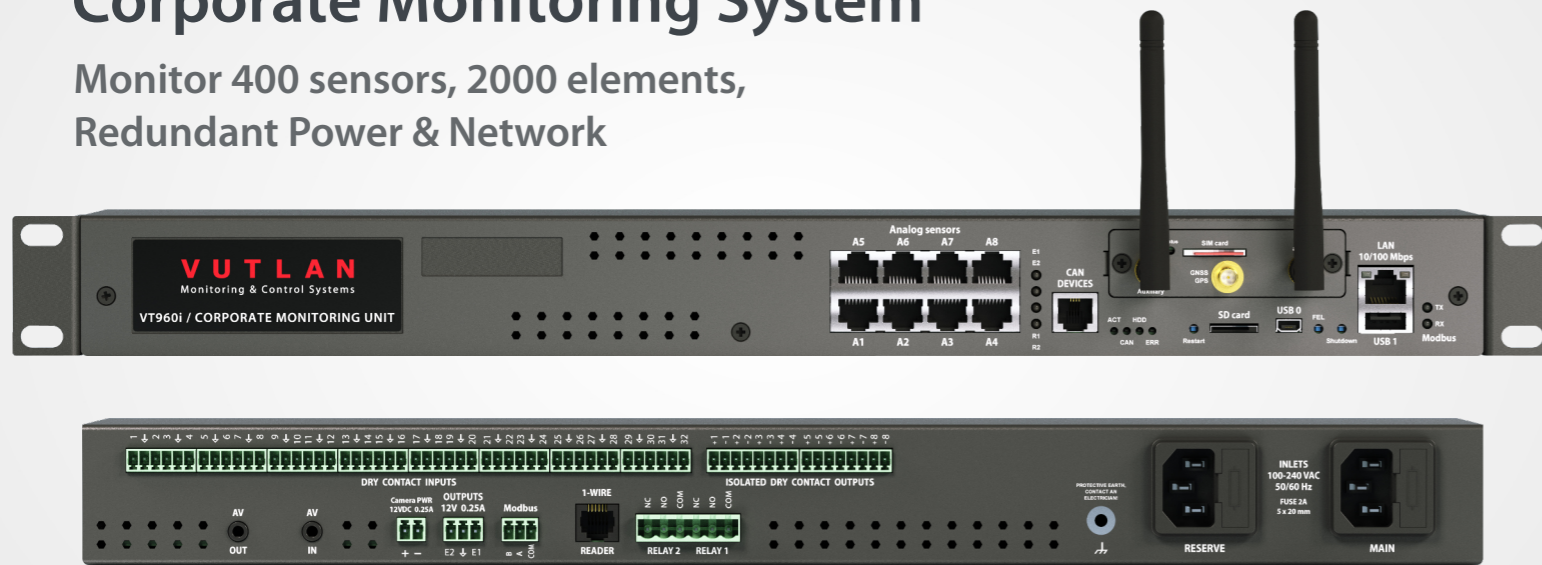
Monitoring your
Infrastructure 24/7

VUTLAN
Monitoring & Control Systems

VT960ii

Corporate Monitoring System

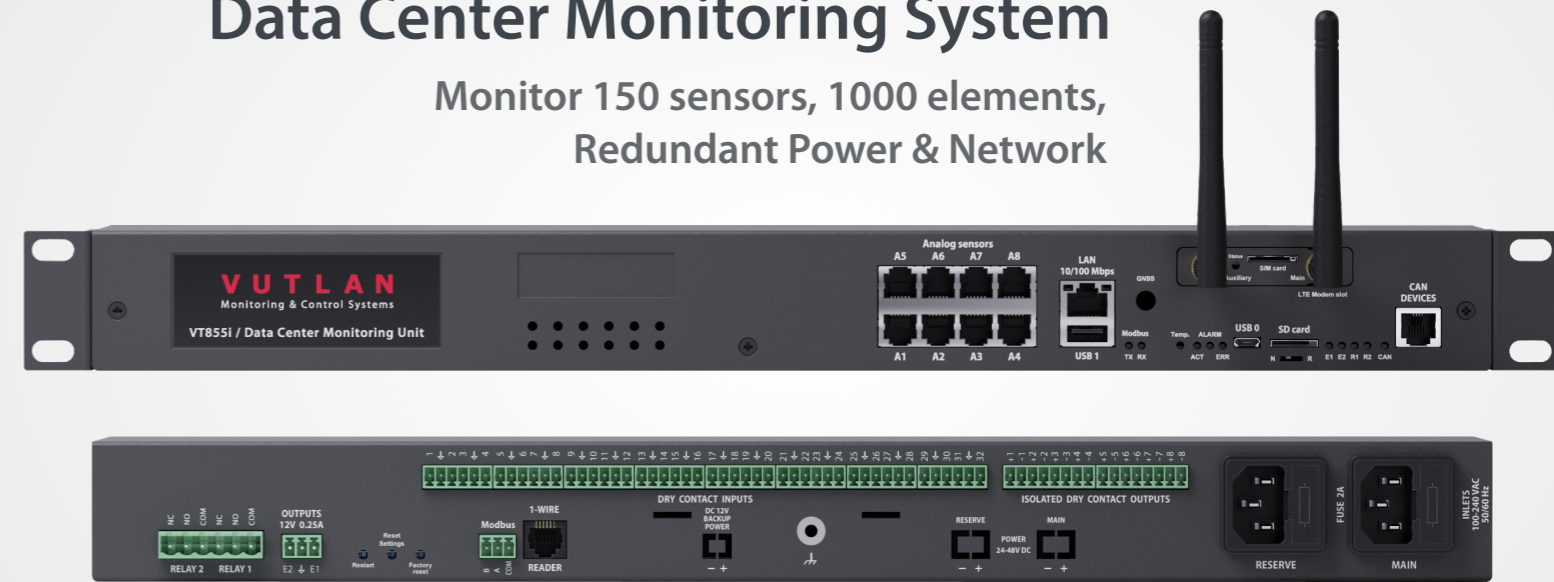
Monitor 400 sensors, 2000 elements,
Redundant Power & Network



VT825ii, VT855ii

Data Center Monitoring System





Monitor 150 sensors, 1000 elements,
Redundant Power & Network



VT960ii Specifications:

CPU Speed / RAM / OS	720mHz / 4 Cores / 1Gb / Linux v.5.10
Ethernet	10/100Mbps
Redundant power	x2 230 V AC or x2 24-48 V DC power inputs
USB port	x2, For USB camera, USB flash, USB hub
Analog ports	x8 ports for sensors (extendable)
CAN port	x1 port (up to 32 sensors & devices)
Modbus RTU port	up to 32 devices
Dry Contact inputs	x32 digital inputs
Dry Contact outputs	x8 Isolated Digital outputs, max. 24VDC, 15mA
Relays (12VDC)	x2 outputs, 0.25A each
Relays (NC NO COM)	x2 (max. 10A for AC) (9-30V for DC)
RFID reader port	x1 RFID reader
SD card slot	Up to 512 Gb SDHC
LTE slot modem	Ethernet, SMS, GPS (ordered separately)
AV camera:	Audio-video output & input, x1 power output
HDD mount:	Available
Warranty	3 years

All Vutlan Monitoring systems support:

-  **Centralized Monitoring & Control**
 - Responsive Web Interface
 - SNMP v1, v2c, v3
-  **Scalability**
 - Extension units, LTE modem, RFID
 - Modbus TCP/IP, 4-20mA, 0-10V, Analog, CAN
-  **Improved security**
 - OpenVPN, SSL, HTTPS
 - Three-tier data access permissions with login
-  **Protocol support**
 - DHCP, HTTP, HTTPS, DynDNS, SMTP, RADIUS, Syslog, NTP server, HTTP request
- API** **Application Programming Interface**
 - Available on-line



System Usability

- Multi-language mobile interface
- First-time wizard
- Sensor graphing for single and multiple sensors



Virtual sensors / devices / elements

- PING, Timers, Triggers, Logic schemes, SNMP GET IP cameras, Groups, Math



Notifications and alerts

- E-mail, SMS, Phone dial, SNMP Traps, Web-to-SMS, SMS link



Logging

- SD card, USB flash, E-mail, FTP

VT855ii Specifications:

CPU Speed / RAM / OS	600mHz / 128Mb / Linux v.5.40
Ethernet	10/100Mbps
Redundant power	x2 230 V AC or x2 24-48 V DC power inputs
USB port	For USB camera, USB flash, USB hub
Analog ports	x8 ports for sensors (extendable)
CAN port	x1 port (up to 32 sensors & devices)
Modbus RTU port	up to 32 devices (VT855i)
Dry Contact inputs	x32 digital inputs
Dry Contact outputs	x8 Isolated Digital outputs, max. 24VDC, 15mA
Relays (12VDC)	x2 outputs, 0.25A each
Relays (NC NO COM)	x2 (max. 10A for AC) (9-30V for DC)
RFID reader port	x1 RFID reader (VT855i)
SD card slot	Up to 512 Gb SDHC
LTE slot modem	Ethernet, SMS, GPS (ordered separately)
Extension	3 years
Warranty	3 years

VT335i

Monitoring Unit

Monitor 100 sensors, 700 elements,
Redundant Power & Network

*Perfect for rack
Monitoring!*



VT608

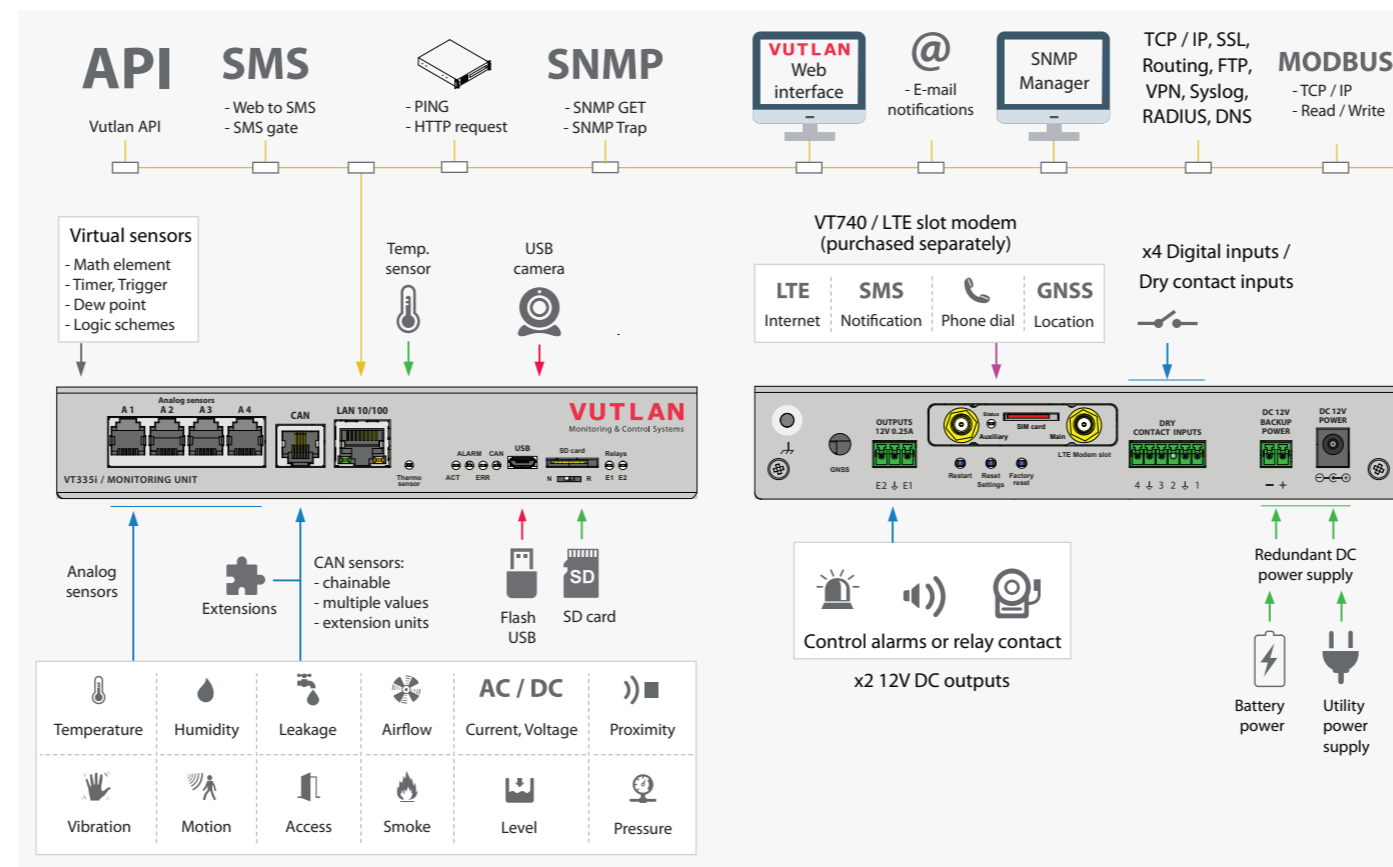
IP Switched PDU

Monitor 8 Outlets, 30 Sensors,
LTE modem, SNMP



VT335i Specifications

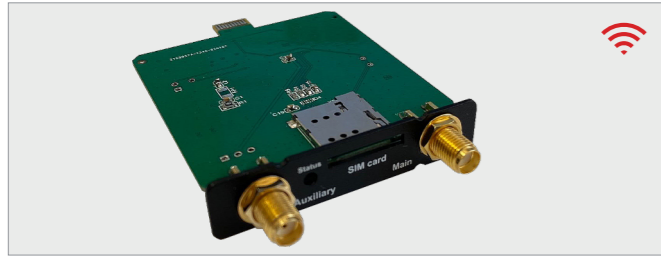
CPU Speed / RAM / OS	600mHz / 64Mb / Linux v.5.40
Ethernet	10/100Mbps
Redundant power	x1 12V DC plus x1 24-48 V DC power inputs
USB port	For USB camera, USB flash, USB hub
Analog ports	x4 ports for sensors (extendable)
CAN port	x1 port (up to 32 sensors & devices)
Dry Contact inputs	x4 digital inputs
Relays (12VDC)	x2 outputs, 0.25A each
SD card slot	Up to 512 Gb SDHC
LTE slot modem	Ethernet, SMS, GPS (ordered separately)
Warranty	3 years



VT608 Specifications

CPU Speed / RAM / OS	300mHz / 64Mb / Linux v.5.40
Ethernet	10/100Mbps
Power outlets	x4 230 V AC
USB port	For USB camera, USB flash, USB hub
Analog ports	x2 ports for sensors (extendable)
CAN port	x1 port (up to 32 sensors & devices)
Dry Contact inputs	x2 digital inputs
Relays (12VDC)	x2 outputs, 0.25A each
LTE slot modem	Ethernet, SMS, GPS (ordered separately)
Warranty	3 years

Popular sensors & modules



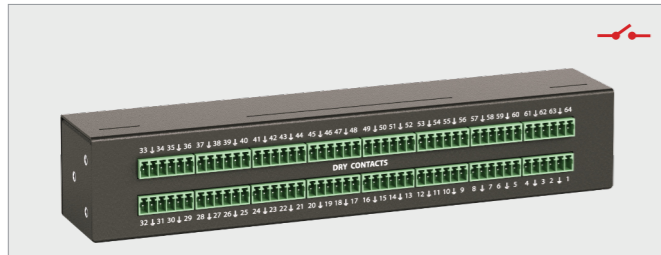
VT740 / LTE slot modem

- Ethernet reservation over 4G LTE
- Receive and send SMS messages



VT408 / Sensor extension unit

- Each unit adds x8 analog sensors
- CAN daisy chain connection of units



VT440 / Dry contact unit

- Adds x32 dry contacts
- CAN daisy chain connection of units



VT490 / Humidity, temperature sensor

- High quality sensor
- CAN daisy chain connection



VT460 / Smoke, humidity, temperature

- Detects smoke of low concentration
- CAN daisy chain connection



VT591 / Leak cable sensor

- Indicates emergence of liquids
- For raised floors, & facility perimeter



VT593 / Spot leak sensor

- Leak detection
- Liquid level detection



VT500 / Temperature sensor

- Very accurate indoor sensor

Popular sensors & modules



VT510 / Humidity sensor

- Measurement of relative humidity indoors



VT520 / AC Voltage monitor

- Measurement of AC 0-246V
- Power socket IEC14



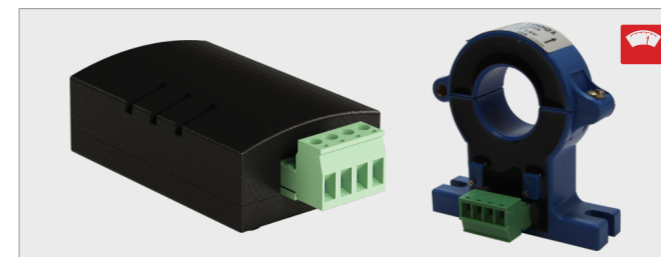
VT530 / Access sensor

- Control open/close status
- Install at doors, windows, racks



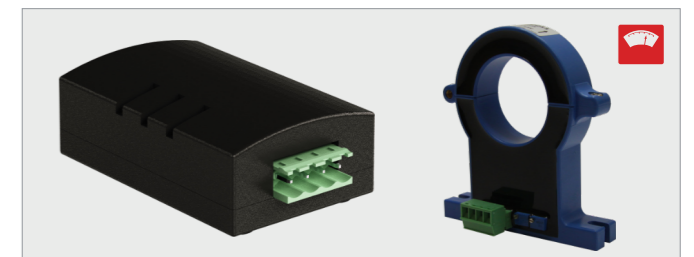
VT570 / PIR Motion sensor

- Movement over an infra-red range



VT407 / AC Current converter

- Measure AC currents 0-100 Amps



VT406 / DC current converter

- Measure DC currents 0-100 Amps



VT410 / DC voltage monitor

- Measure DC voltage
- 0-15V and 0-75 V options



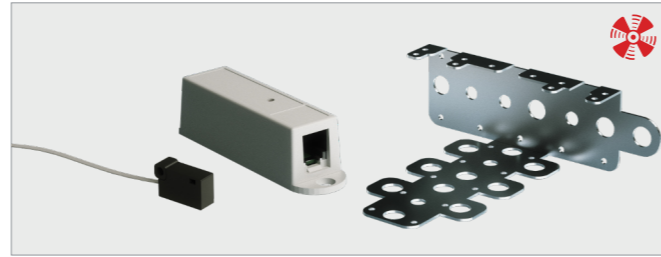
VT5520DIN / AC Voltage monitor

- Measurement of 0-246V, AC
- 1% accuracy

Popular sensors & modules



VT501 / Outdoor temperature sensor
 - Measurement temperature outdoors
 - Operating temperature: -50... +105°C



VT550 / Wind speed meter
 - Controls airflow 0 - 3 m/s
 - For air conditioners, and fans



VT11 / Relay contact 5A
 - Relay switchable contact
 - Control power: Locks, siren, heater, etc.



VT540 / Vibration sensor
 - Monitor vibration
 - Detect intruder breaking door, window



VT107 / RFID card reader
 Used for access control with RFID cards



VT100 / USB dome camera
 - 720P HD, Dome, USB
 - IR Camera 2.0&1.1 UVC, 1.0 megapixel



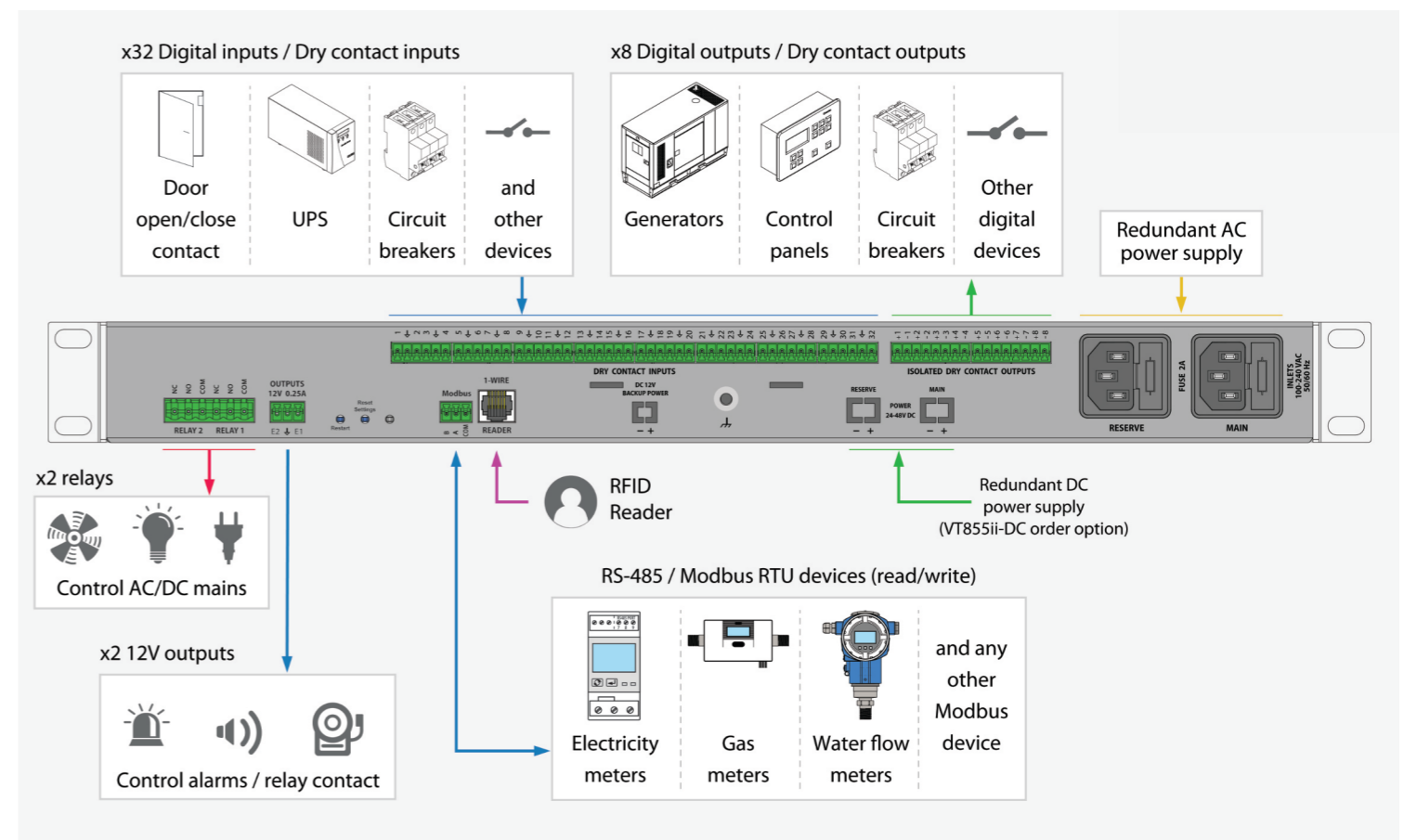
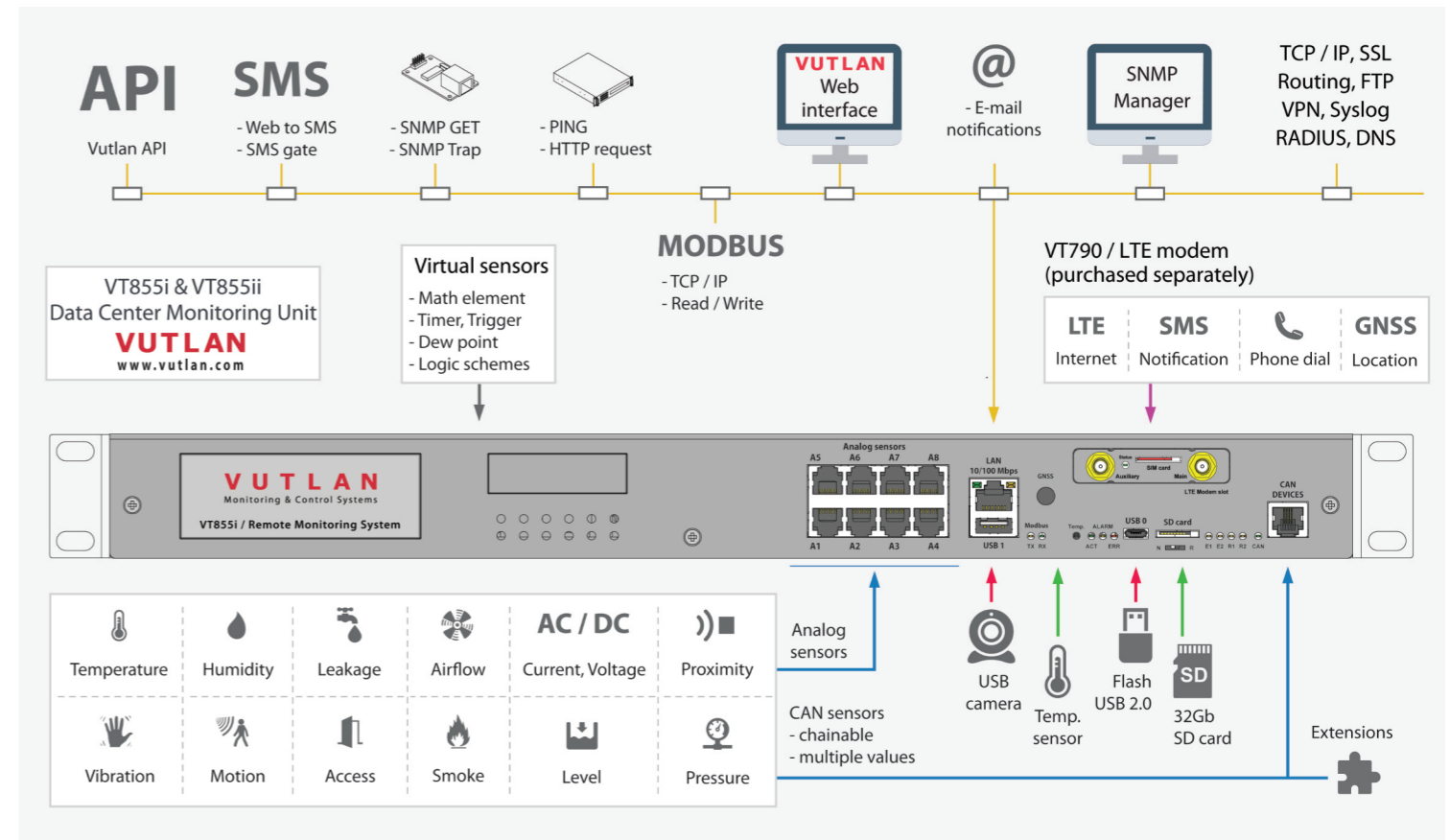
VT420 / Converter 4-20mA
 - Current loop 4-20mA converter
 - For 3rd party sensors, e.g. Level sensor



VT103 / Alarm beacon
 - Light & sound alarm
 - Connects to 12V DC output

VT855ii / Data Center Monitoring Unit

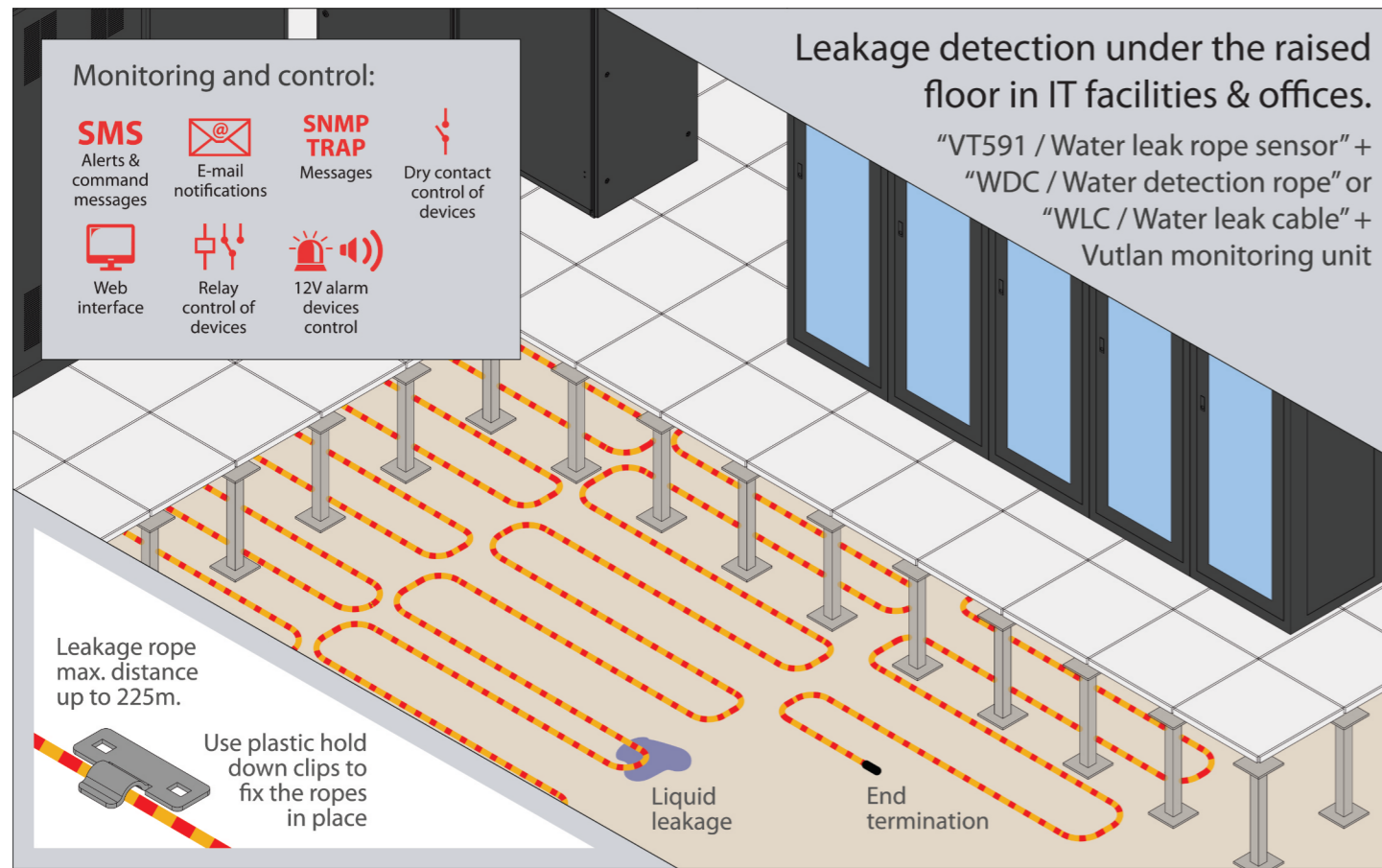
Monitor 400 sensors, 2000 elements; Redundant power supply and network



Leak detection under raised floors

Detectable liquids:

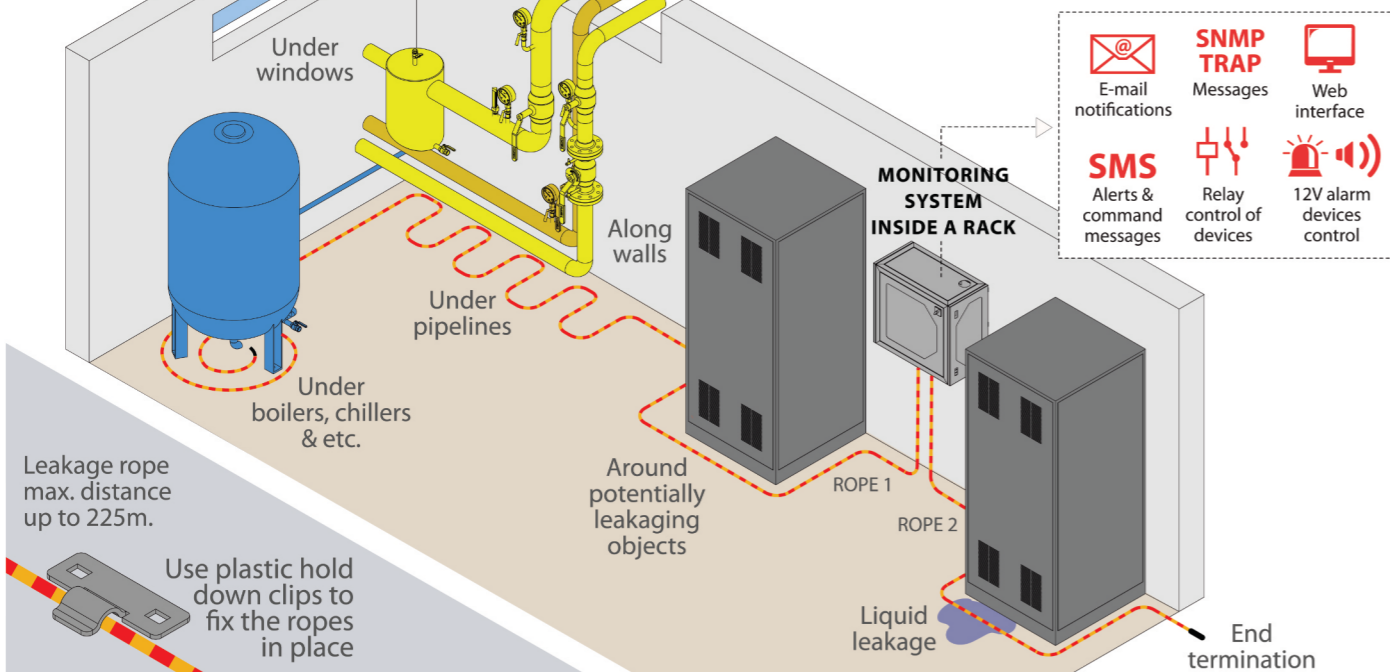
- clean, polluted and distilled water;
- acids, alkali, alcohols;
- other electrically conductive liquids;



VUTLAN
Monitoring & Control Systems
SOLUTIONS

Perimeter leakage detection using

"VT591 / Water leak sensor"
 "WDC / Water detection rope" or "WLC / Water leak cable"
 and Vutlan monitoring system

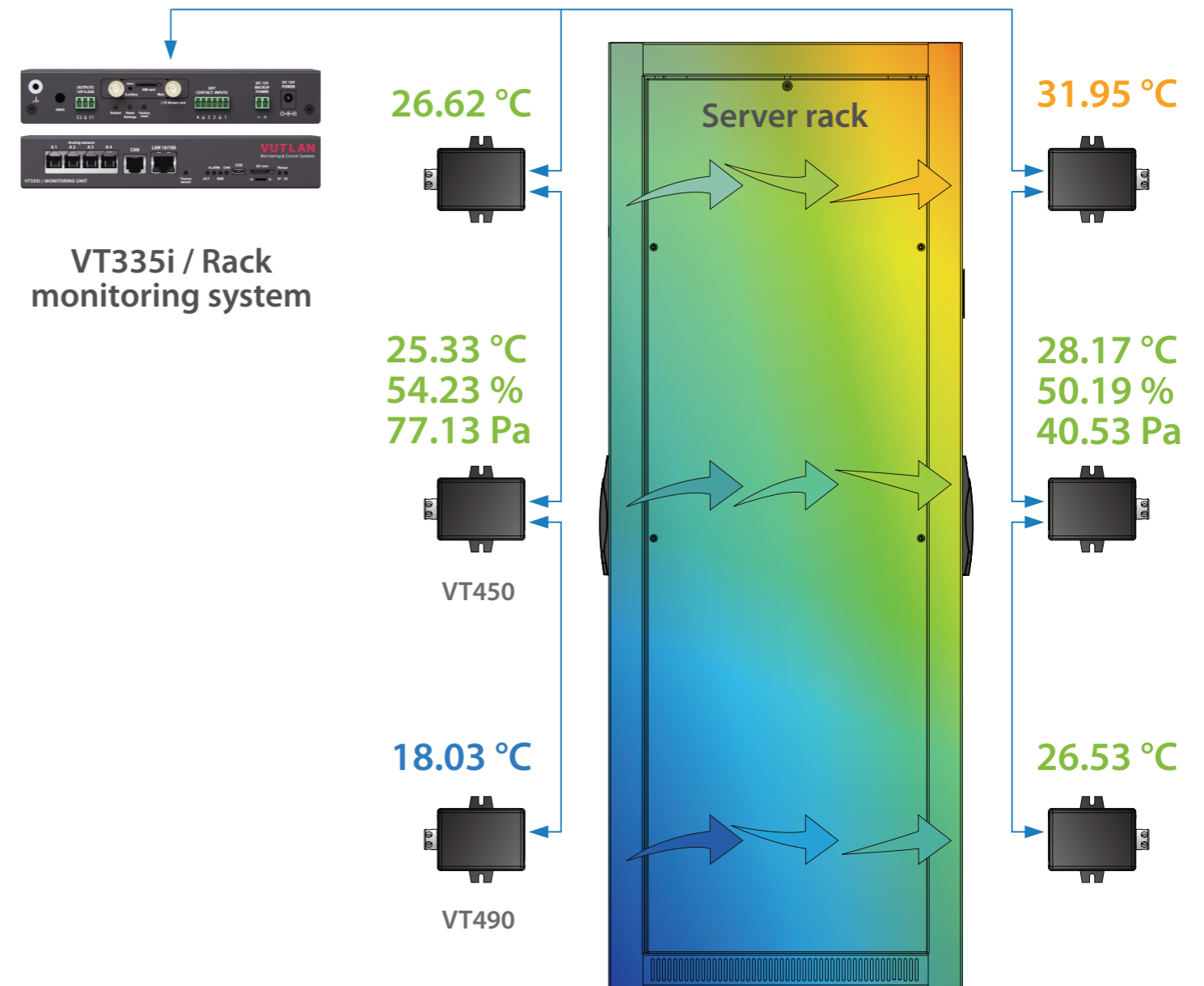


Thermal mapping

Vutlan sensors can capture the complete thermal conditions of a rack/installation and all its equipment and monitor additional parameters such as pressure and humidity.

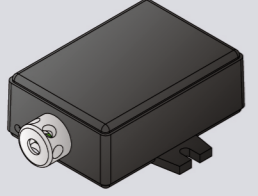
Advantages :

- Identify temperature, pressure, relative humidity, dew point & hot spot differential between front and rear
- Monitor air intake and exhaust
- Position the sensors at the front & rear; top, middle and bottom of cabinet
- Create logical patterns for alerting using notifications such as SMS, email, SNMP, phone dialing
- Create thresholds (low alarm, low warning, normal, high warning, high alarm)



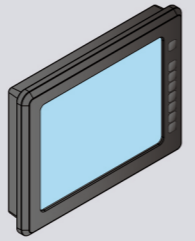
Rack monitoring

Environmental sensors



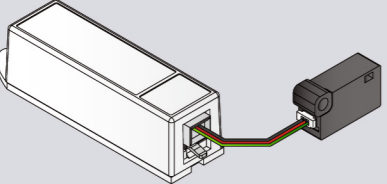
VT490 Humidity & temperature
VT450 Pressure, humidity & temperature

Interface



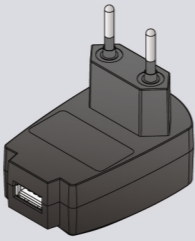
LCD Touch display with Ethernet

Fan monitoring



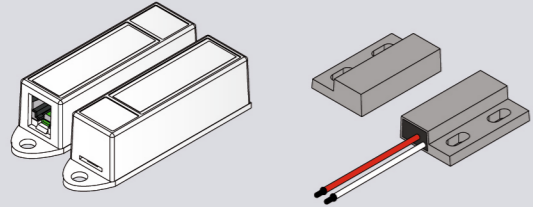
VT550
Wind speed meter

Power strip voltage



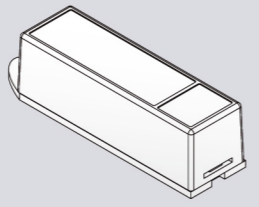
VT520
AC Voltage Monitor

Door open / close



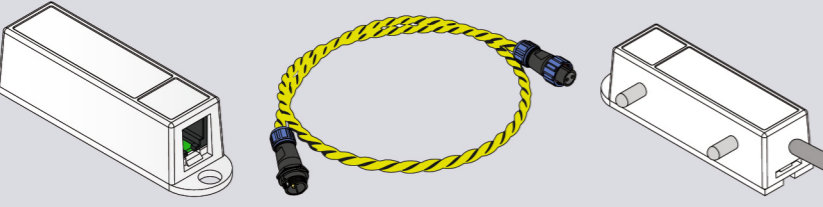
VT530 Access sensor KMS-30 Access contact

Vibration

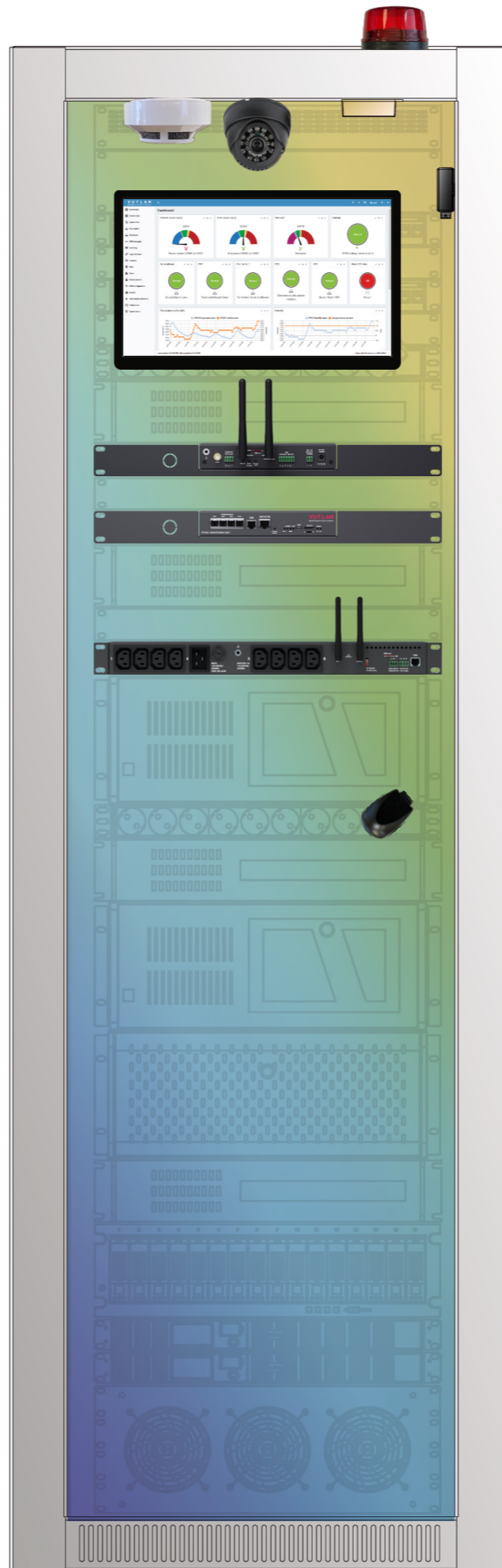


VT540
Vibration sensor

Leak detection



VT591 Leak sensor & WLC Leak cable VT590 Spot leak detector

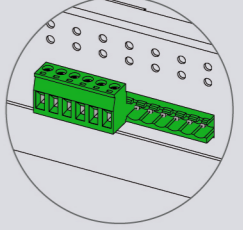


Smoke / Fire



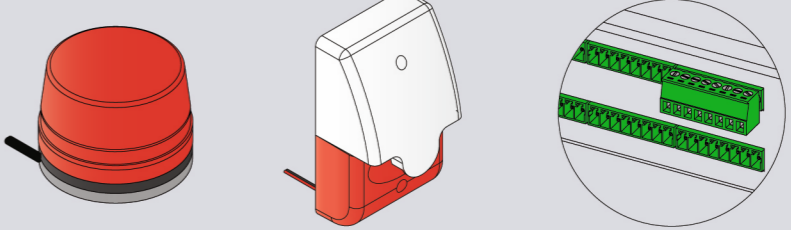
VT460 Smoke, humidity & temp.
VT560 Smoke detector

AC/DC devices



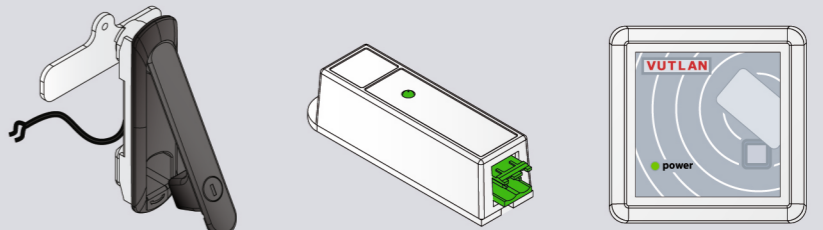
Relay switching of equipment

Alarms



VT105 Strobe light VT103 Alarm beacon Alarm inputs/outputs

Access Control



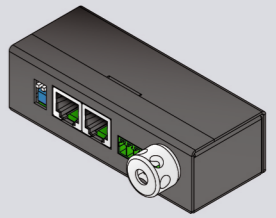
Control electronic swing handle lock VT11 / Relay contact 5A VT11 / RFID card reader

Surveillance



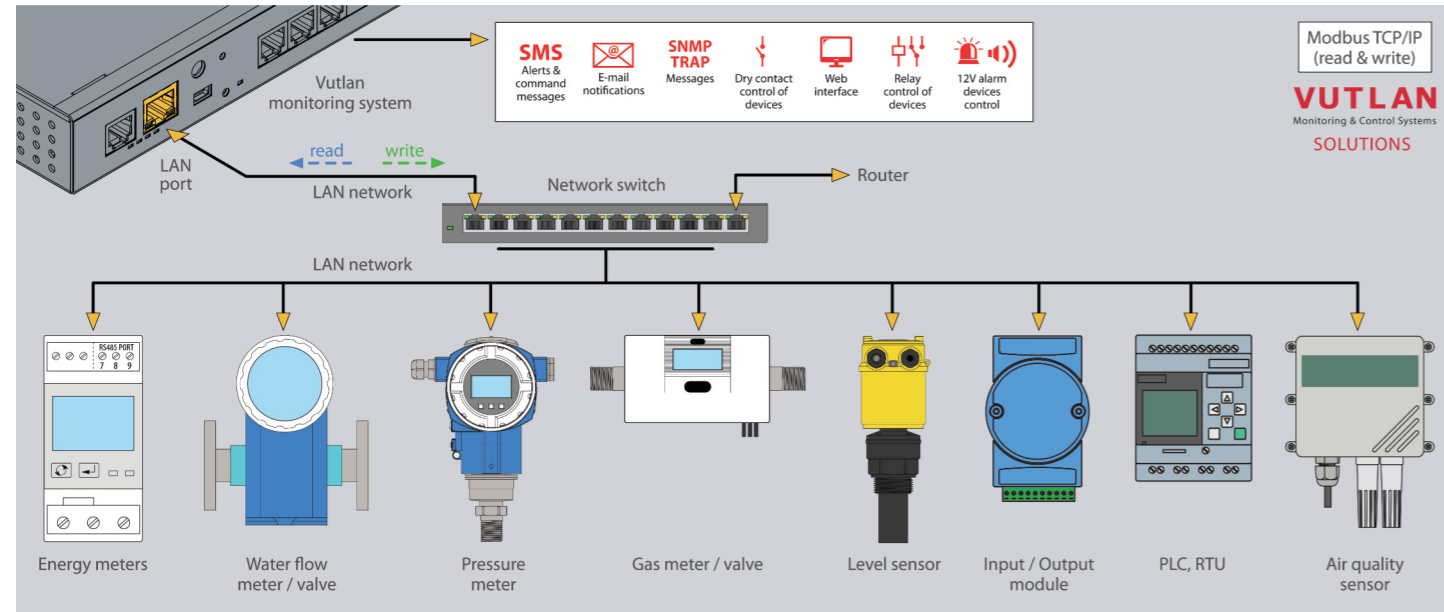
USB100
USB dome camera

Extension



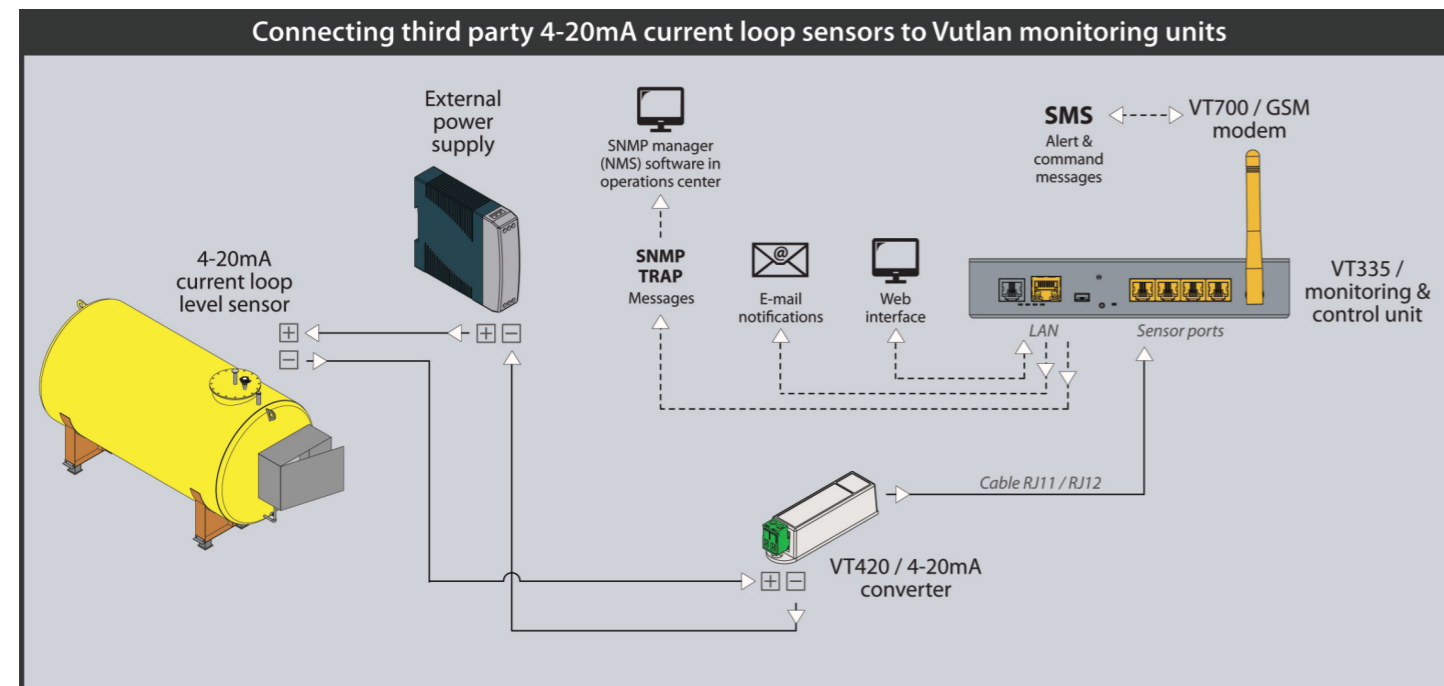
VT430
Rack control unit

Monitor Modbus TCP / IP industrial meters

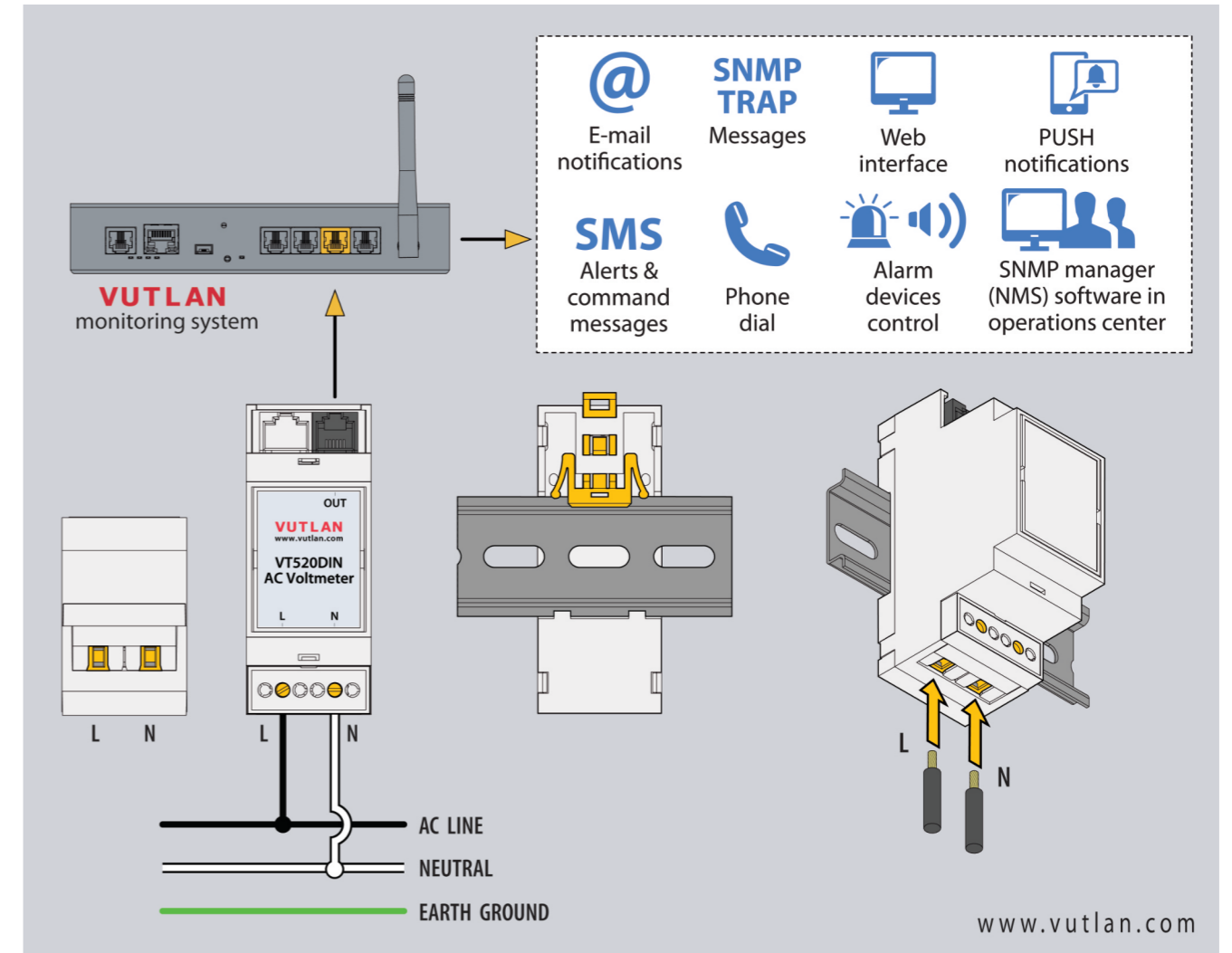


- Periodically read from or write information to Modbus devices, that are connected to the Vutlan monitoring unit via Modbus TCP/IP.
- Configure alarms that will trigger preconfigured actions such as sending SMS, activating specific digital/relay outputs on Vutlan monitoring unit, or sending Modbus requests to Modbus devices when alarm conditions are met (for example specific client device register value falls below configured alarm value).

Monitor fuel tank level

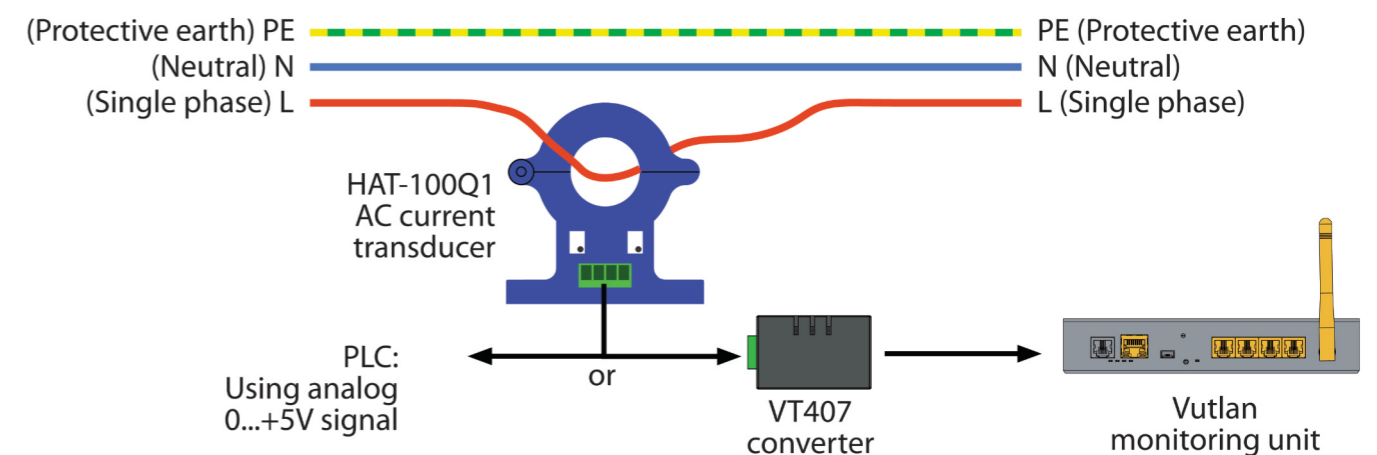


Monitor voltage in AC power line



Monitor current in AC power line

Measuring current in AC power circuit using:
VT407 / AC HAT converter &
HAT-100Q1 / AC current transducer



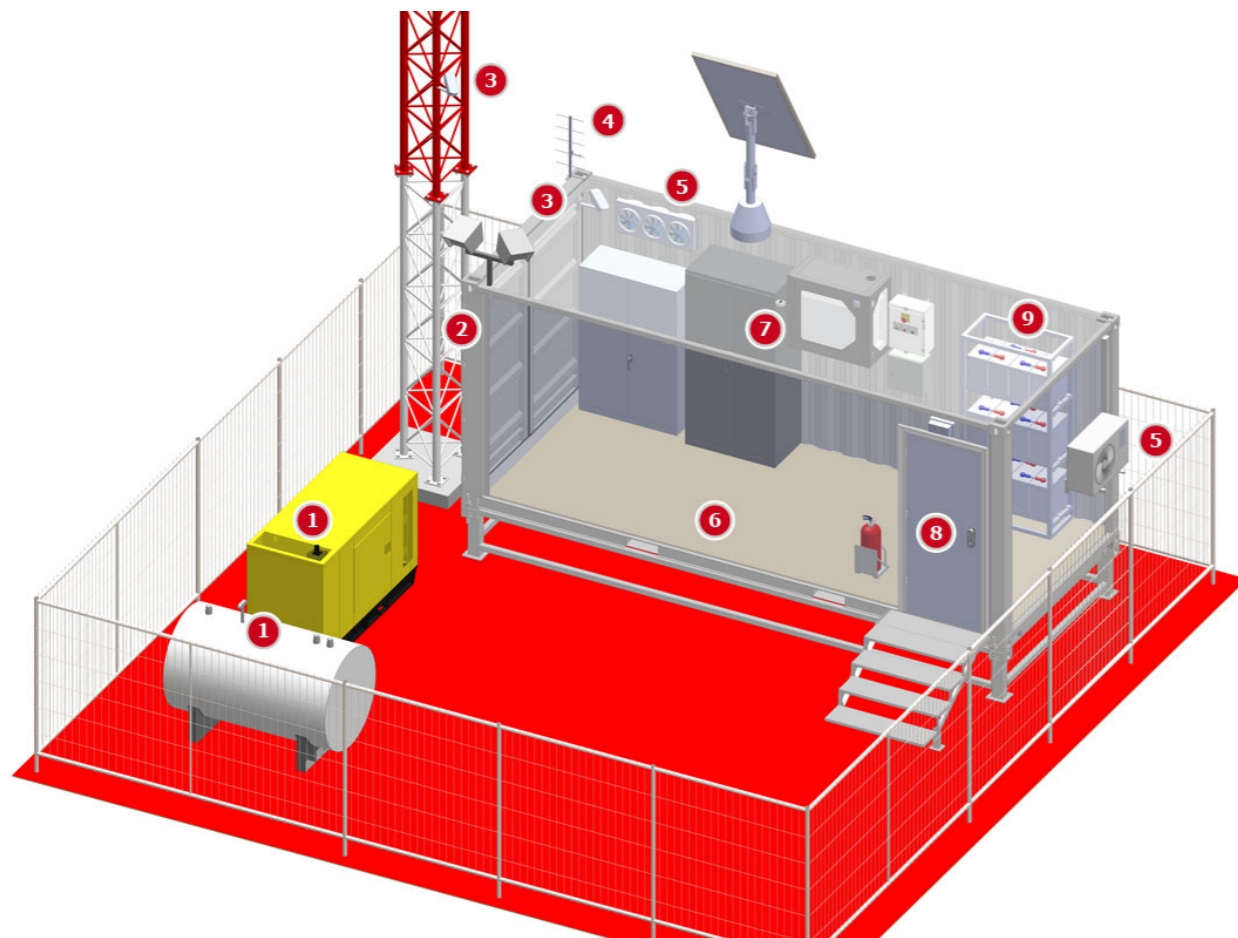
Monitor & control a remote BTS site.

Using Vutlan monitoring and control solutions for remote BTS sites (Cell sites) helps to meet two main challenges: efficiency and security. Our monitoring units provide the Network Operation Center information about key parameters regarding the condition of the site in real-time, help to manage the maintenance of the site and make proper decisions, cut costs for personnel and operational expenses and provide sensor logs for root cause analysis for future problem prevention.

A wide variety of sensors with help to prevent unauthorized access, theft, and damage to the site, and monitor technical equipment, and energy consumption.

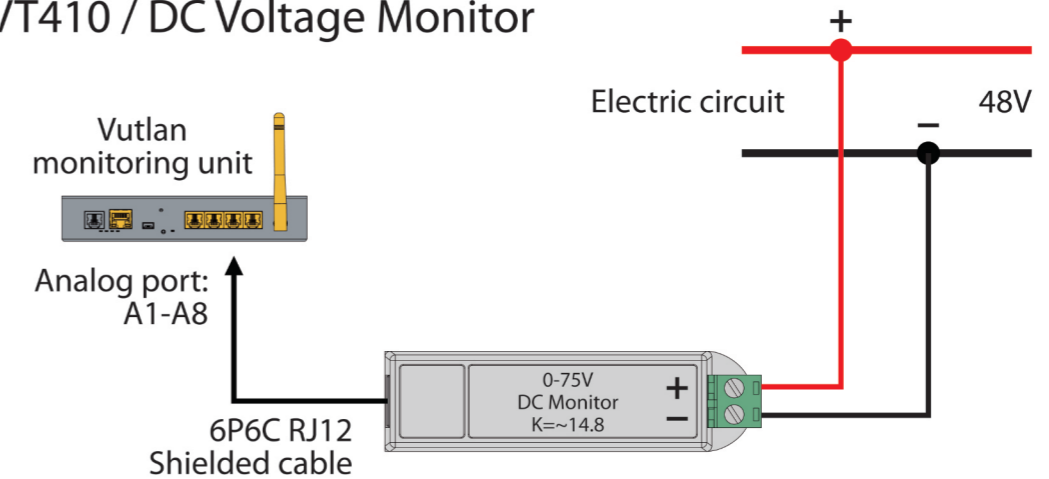
Notifications and alerts keep maintenance personnel constantly informed about the condition of their telecommunication infrastructure.

Logic schemes help to provide an easy-to-use method for monitoring and controlling the equipment as well as to help set up a reliable alert and notification system.

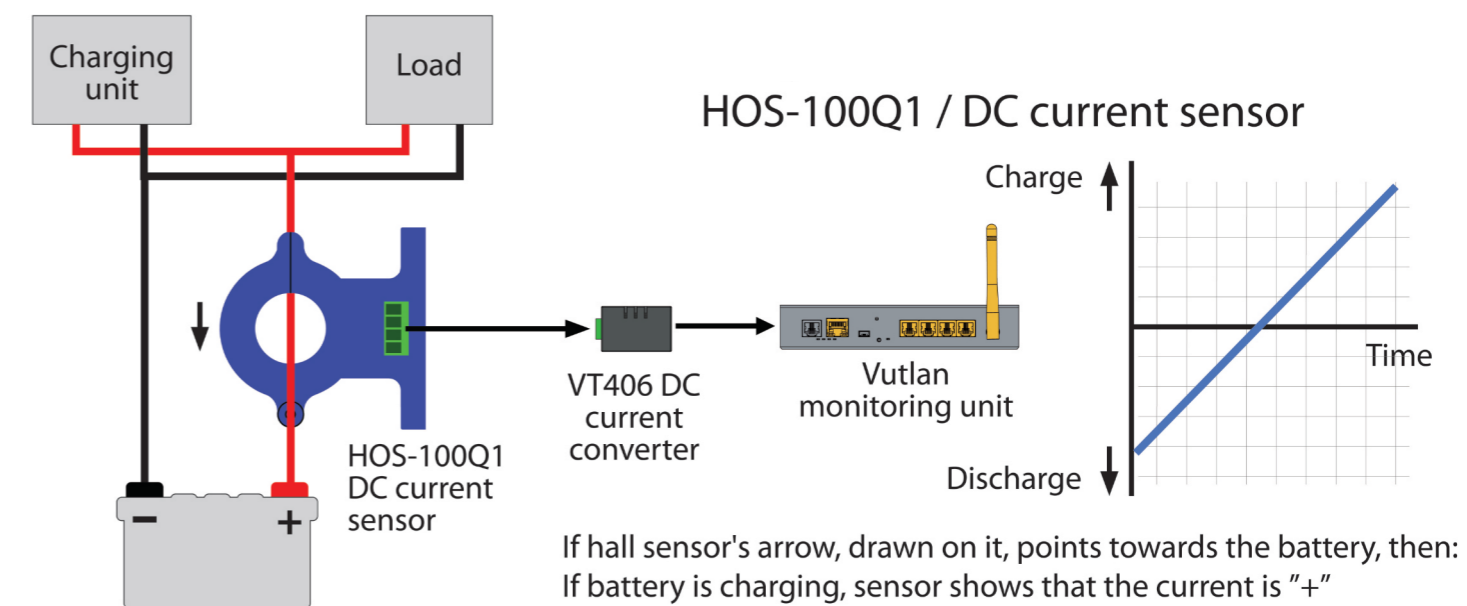


Monitor voltage in DC power line

DC voltage monitoring using Vutlan VT410 / DC Voltage Monitor



Monitor battery charging system



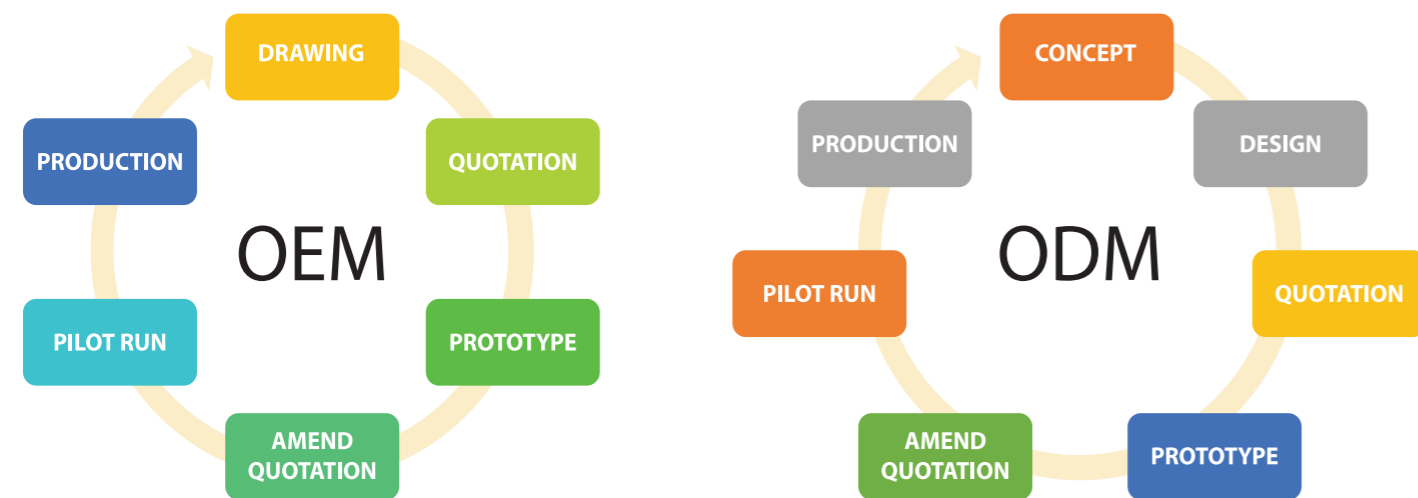
If hall sensor's arrow, drawn on it, points towards the battery, then:
 If battery is charging, sensor shows that the current is "+"
 If battery is discharging, sensor shows that the current is "-".

OEM / ODM manufacturing services

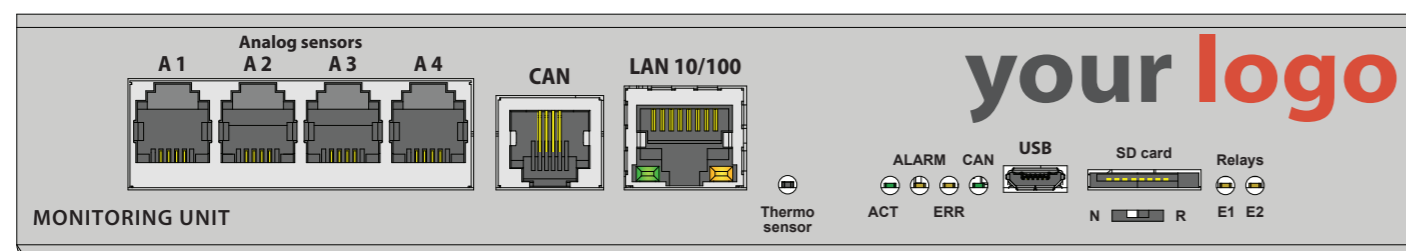
Vutlan provides OEM services to some of the major European companies from Germany, Switzerland, and Poland.

We have the experience and capabilities needed to help customers reduce their time to market, scale up manufacturing capacity, and develop electronic equipment for their instrumentation.

Our OEM and end-customer projects range from applications in remote site management, power monitoring, data center cabinet access control, enterprise access control and time and attendance to highly custom multi-function industrial, oil and gas, and security solutions.



"Professional ODM Partner to **Design** **Customize** **Manufacture** electronic equipment"



Mission

Our aim is to deliver user friendly, reliable, flexible, feature rich, powerful and reasonably priced remote monitoring & control units, PDUs, sensors, gateways and other electronic equipment to Telecom companies, Data centers, and Industrial communication companies. We aim to provide an outstanding level of support to all customers.

Vision

We aim to become the leader in network-based environmental and security monitoring solutions by defining the market and by setting the standards for technical achievements.

Monitor:

- | | | | |
|-------------------------|--------------|------------------------------|--------------------------|
| Temperature | Humidity | Motion | SNMP
Trap, Get |
| Leakage | Access | Airflow | Proximity |
| Vibration | Smoke | Modbus
TCP/IP, RTU | Relays |
| AC / DC
Power | Pressure | Level | PING |
| 4-20mA | Dry Contacts | Outlets | Alarms |

and many other...

Vutlan

Partner Network

Vutlan is working with Distributors / Solution Providers and Integrators all around the world. We are constantly expanding and we are always happy to welcome new partners.

+51

BRANCHES

+38

COUNTRIES



Vasilij Ťažev

Product Manager, CEO

M: +421 908 399 047

E: vasily@vutlan.com



Vladimír Ťažev

Marketing Director, CEO

M: +421 908 399 063

E: vladimir@vutlan.com

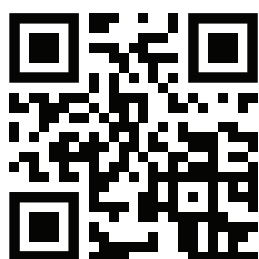


Anastasia Eliseeva

Sales Manager

M: +421 950 312 247

E: sales@vutlan.com



Vutlan s.r.o. (LTD)
43 ul.Svornosti,
82106, Bratislava,
Slovak Republic, E.U.
T: +421 2 4524 1440
E: info@vutlan.com
www.vutlan.com

VUTLAN
Monitoring & Control Systems